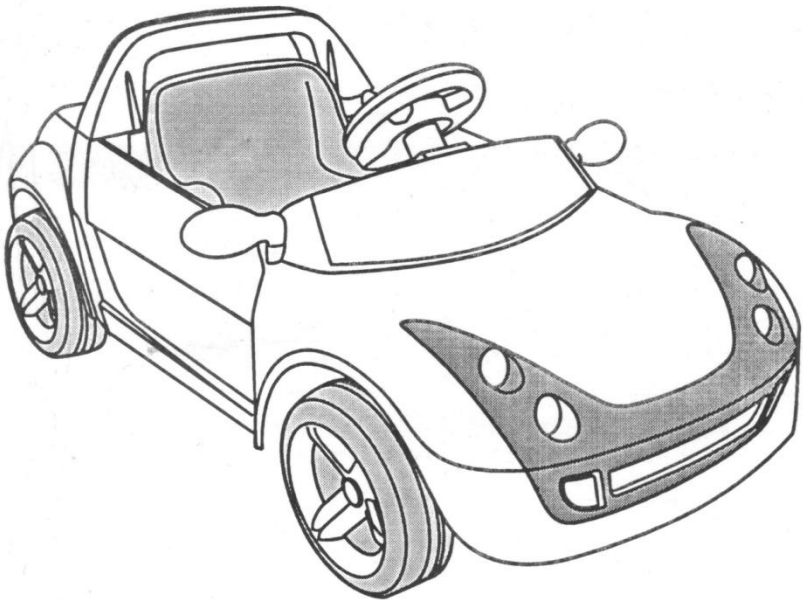


CHILDREN'S ELECTRONIC TOY CAR OPERATION INSTRUCTIONS

Please read this manual in detail before using



- This toy is equipped with a safety isolating transformer. Cable, cord and plug should be examined before using.
- Adult assembly required. Charging the battery can only be operated by adult all times.
- The manual and packaging should be well kept since it contains important information.

Have already implemented ISO9001:2000 authentication

About our product

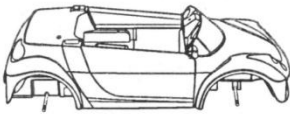
Thank you for your purchasing our products, we always keep pursuing being outstanding and designing comfortable and safe ride-on car for children .it will provide your children a wonderful childhood and your family lots of happiness.

Please read the manuals carefully before using this product. You can get correct operation method, simple and easy installation procedure. Moreover, it can instruct you how to prevent improper way of operation, because any incident can result in serious injury. Please read it carefully to make sure that all children obey all warning, cautions, instructs and safety topics and assure young riders are able to safely use this product.

The Specification

Suitable age:	37-96 Months	Battery:	6V10AH *1
Load Capacity:	Under30KGS	Size of car:	118*58*48CM
Speed:	3~5KM/H	Power way:	Charging type
Charge:	Input: depend on local voltage Output: DC 6V1000mA	Average battery life:	Approximately 300 times
Charge time:	8-12 Hours	Fuse	F10A 250V

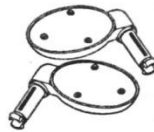
Parts list



Vehicle Body x1



Steering Wheel x1



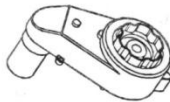
Viewfinder x2



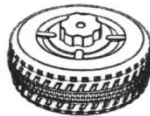
Seat x1



Back lamp Bracket x1



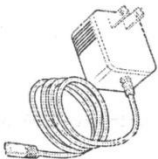
Gear Case x1



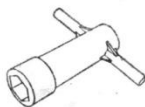
Wheel x4



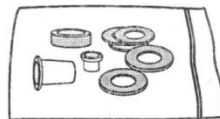
Cap Nut x4



6 Volt Charger x1

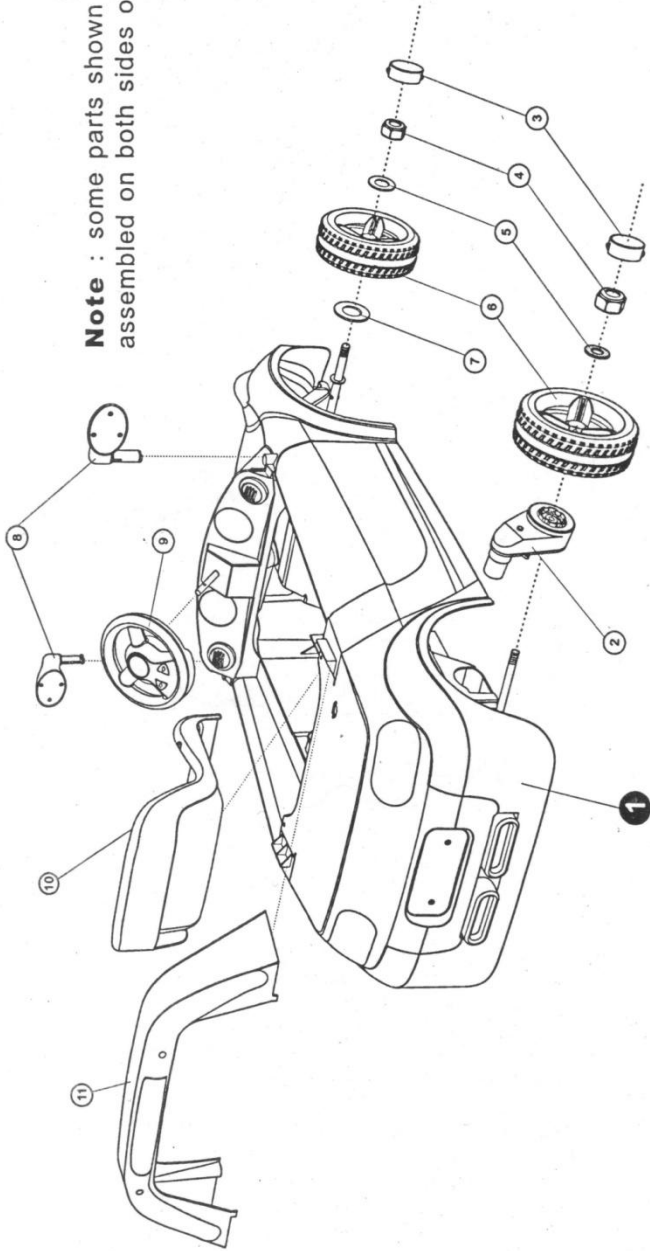


spanner x1



Accessory Package x1

Parts Diagram



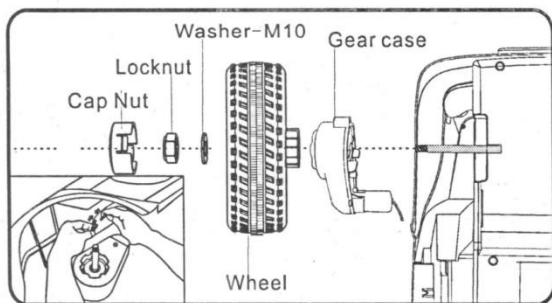
Note : some parts shown are assembled on both sides of vehicle

① Vehicle Body x1	② Gear Case x1	③ Cap Nut X4
④ Locknut X4	⑤ ϕ 10 WashersX4	⑥ Wheel X4
⑧ Viewfinder x2	⑨ Steering Wheel x1	⑩ Seat x1
		⑪ Back lamp Bracket x1

Tools Required

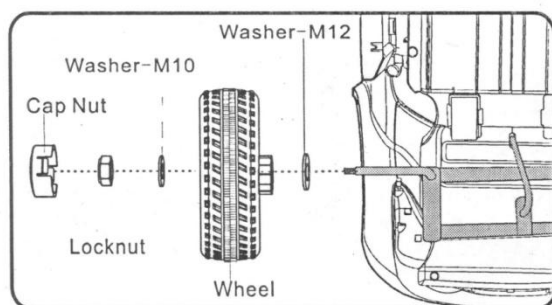
Screwdriver(not included)
Spanner

Assembly Steps



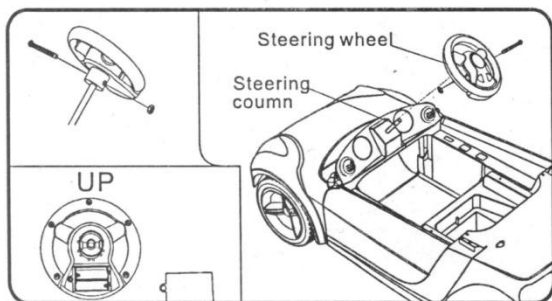
Assemble real driving wheel

- First turn the vehicle body over, screw off the nut from the rear axle, take out the $\phi 10$ washer.
- Slide the gear case onto the rear axle.
- Connect the cable of the motor and the cable of the car.
- Slide the driving wheel onto the rear axle, make sure the driving wheel inserts onto the pins in the gear case.
- Slide the $\phi 10$ washer onto the rear axle. Fasten the locknut by a spanner, lastly insert a decoration cover into the wheel cover.



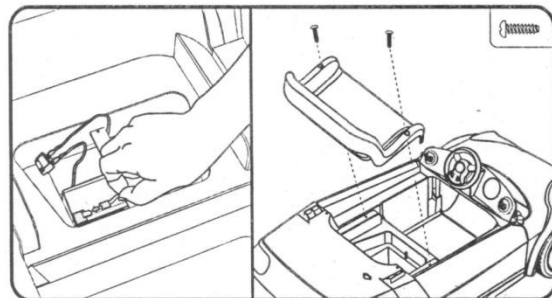
Assemble wheel

- Screw off the nut from the axle, take the $\phi 10$ washer and round bushing out (leave over the big washer)
- Slide the round bushing (ring end first) onto the axle.
- Slide the wheel (ribbed side first) onto the axle. Slide the $\phi 10$ washer onto the axle.
- Fasten the locknut by a spanner, lastly insert a decoration cover into the wheel cover. Remember to follow the same steps for other two wheels.



Assemble the battery of the music & Assemble steering wheel

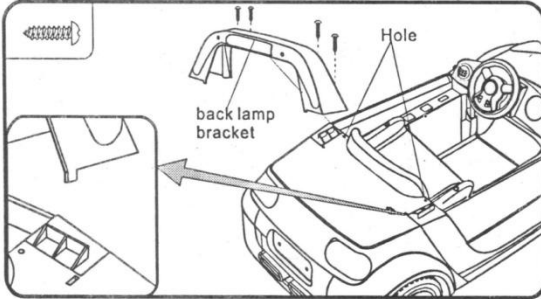
- Screw off the screw on the steering wheel by screwdriver, remove the battery cover.
- Put 2 dry batteries in the slot, Pay attention to the polarity (anode to anode, cathode to cathode), then assemble the battery cover.
- (Please NOTE : the product does not provide dry battery)
- Screw off the nut from the steering wheel, insert the steering wheel onto the end of the steering column. Pay attention to the steering wheel front and back.
- Insert the bolt through the steering wheel and steering column, tighten the nut by then.



Connect the power supply & Assemble seat

- Plug two connector into each other (red to red, black to black) according to the picture.
- Screw off the screw which place of the seat. Place the seat at the homologous position on the vehicle body. Insert two screws with a screwdriver.

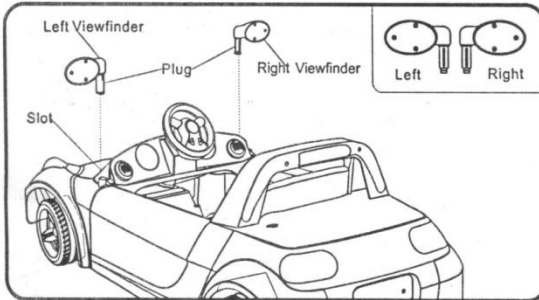
Assembly Steps



Assemble back lamp bracket

Fit the two tabs on the back lamp bracket into the slots in the end of the vehicle body.

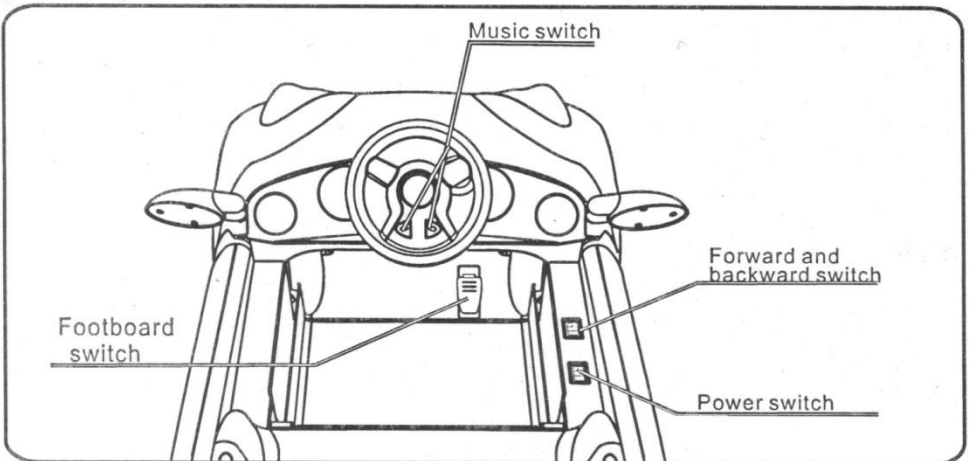
Insert screw through the hole in the side of the back lamp bracket. Tighten the screw.



Assemble viewfinder

- Insert the two plug of the viewfinder into two slot of the car body on each side.
- Push down near each tab until the viewfinder "snaps" into place.

Function of the Vehicle



(NOTE: If the vehicle is the remote control operation, functions of the car please refer to the remote control electronic toy car operation instructions.)

Charging The Vehicle

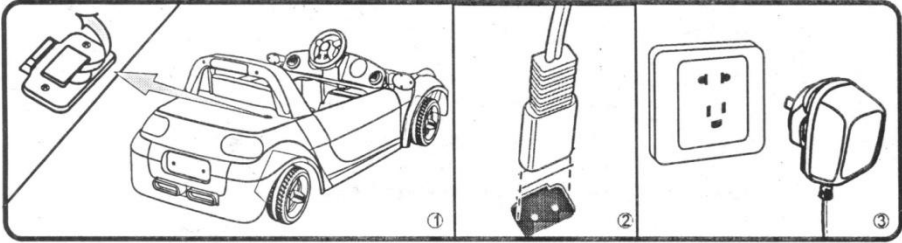
The charging input plug in the back of vehicle. Connect charger plug to battery input plug to charge the battery.

Caution: You must charge the 6-Volt battery for a "Full" 10 hours prior to use.

Never charge the battery longer than 20 hours.

Failure to charge the battery as directed will cause permanent damage to the battery. After each use, or once a month minimum, recharge the battery of your vehicle for 8-10 hours. Do not charge the battery longer than 20 hours.

NEVER run battery completely flat.



Open the cover of the socket (the socket under the back of the back lamp bracket. As shown ①)

Plug the charger port into the input socket. As shown ②

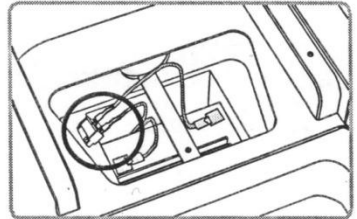
Plug the charger plug into a wall outlet. As shown ③

Fuse

When the vehicle won't work or can not be charged, please check the fuse .replace the fuse if necessary, and wait for 15 seconds after the fuse reset and power or restored.

The car features one thermal reset fuse in under the seat. (Refer to the picture.)

They will automatically trip and cut all power to vehicle if the motor, electric system or battery is overload. The fuse will reset and power will restored, after approximately 15 seconds.



Trouble Shooting Guide

Problem	Possible Cause
(1).The 6-Volt battery Will not recharge	<ol style="list-style-type: none"> 1.Motor connector or adapter connector is loose. Make sure the motor connector and the adapter connector is firmly plugged. 2.The 6-volt battery will not recharge. Make sure the charger is plugged into a 24ov wall outlet and the power flow to the outlet is on. 3.Charger is not plugged in. Make sure the charger is plugged into a 24ov wall outlet and the power flow to the outlet is on. 4.Check and replace fuse if necessary

Trouble Shooting Guide

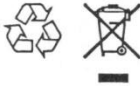
<p>(2). The vehicle does not run</p>	<ol style="list-style-type: none"> 1. The battery may be low on power. After each use, or once a month minimum, charge the battery for a "full" 10 hours. DO NOT leave the battery on the charger for more than 20 hours. 2. Thermal fuse has tripped. Replace the tripped fuse by another spare one. 3. Wheel nuts are loose. If the wheel nuts with a wrench. 4. Motor connector or wires are loose. Make sure the motor connector is firmly plugged into the battery. 5. Battery is dead. Have you properly maintained the battery according to the directions? Is the battery old? Your battery may need to be replaced. 6. Electrical system is damaged. Water may have corroded the system, or loose dirt, gravel or sand might have jammed the switch. Check. 7. Motor is damaged. The vehicle needs professional repair.
<p>(3). The vehicle does not run very long.</p>	<ol style="list-style-type: none"> 1. Battery may be undercharged. You may not be charging the battery long enough. After each use, or once a month minimum, charge the battery for a "full" 10 hours. DO NOT leave the battery on the charger for more than 20 hours. 2. Battery is old. The 6-volt battery will eventually lose the ability to hold a charge. Depending on the amount of use, and varying conditions, the battery Should operate for one to three years. Replace the battery with a new 6-volt battery.
<p>(4). Battery buzzes or gurgles when charging.</p>	<ol style="list-style-type: none"> 1. This is normal and not a cause for concern. It may also be silent When charging, which is also normal.
<p>(5). Charger feels warm when recharging battery.</p>	<ol style="list-style-type: none"> 1. This is normal and not a cause for concern.
<p>(6). The vehicle runs sluggishly or beeping occurs.</p>	<ol style="list-style-type: none"> 1. Battery needs recharging. After each use, or once a month minimum, charge the battery for a "full" 10 hours. DO NOT leave the battery on the charger for more than 20 hours. Low battery signal will sound when the battery is running low on power. 2. Battery is old. The 6-volt battery will eventually lose the ability to hold a charge. Depending on the amount of use, and varying conditions, the battery Should operate for one to three years. Replace the battery with a new 6-volt battery. 3. Vehicle is overloaded. Maximum weight is 30 kg. DO NOT overload the vehicle. DO NOT tow anything behind the vehicle. ONLY one rider at a time.

Maintaining Your Vehicle

- Occasionally use a lightweight oil to lubricate moving parts such as wheels and the steering linkages.
- Park the vehicle indoors or cover it with a tarp to protect it from wet weather.
- Keep the vehicle away from sources of heat, such as stoves and heaters. Plastic parts may melt.
- **ADULTS ONLY:** Recharge the battery after each use. Recharge the battery at least once a month when the vehicle is not being used. See pages 5 for instructions about recharging the battery.
- **DO NOT** wash the vehicle with a hose. **DO NOT** wash the vehicle with soap and water.
- **DO NOT** drive the vehicle in rainy or snowy weather. Water will damage the motor, electric system and battery.
- Clean the vehicle with a soft, dry cloth. To restore shine to plastic parts, use a non-wax furniture polish. **DO NOT** use car wax. **DO NOT** use abrasive cleaners.
- **DO NOT** drive the vehicle in loose dirt, sand or fine gravel, which could damage moving parts, motors or the electric system.

Disposal Of Battery

Disposal of Battery



- Your sealed lead-acid battery must be recycled or disposed of in an environmentally sound manner.
- Do not dispose of your lead-acid battery in a fire. The battery may explode or leak.
- Do not dispose of a lead-acid battery in your regular, household trash. The incineration, land filling or mixing of sealed lead-acid batteries with household trash is prohibited by law.
- Return an exhausted battery to your local approved lead-acid battery recycle, such as a local seller of automotive batteries.
- Contact your local waste management officials for other information regarding the environmentally sound recycling and disposal of lead-acid batteries.